

The PROSPECT-2 Study

Clinical study testing an investigational medicine for adolescents and teens with chronic migraine

[Learn More](#)



What is the study testing?

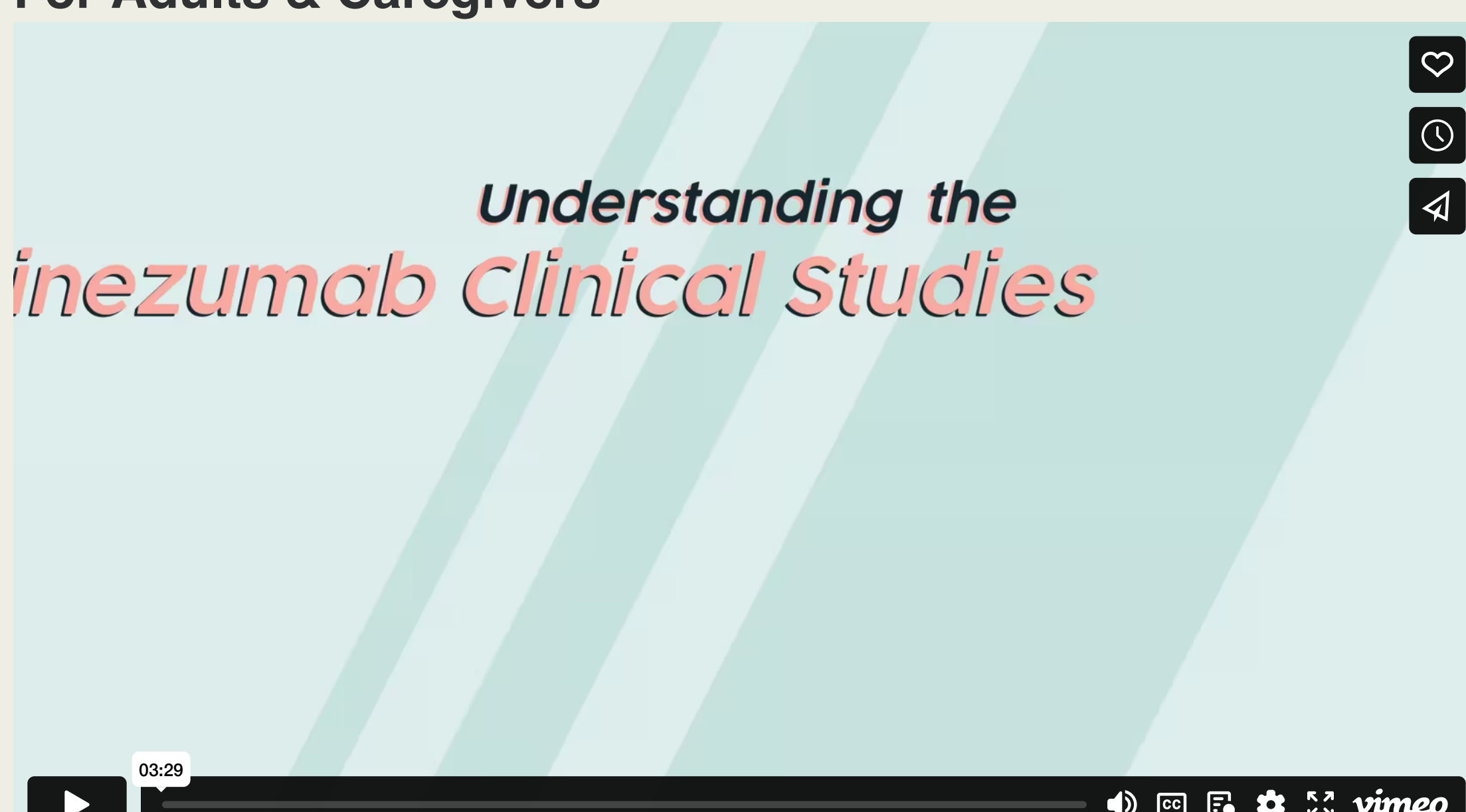
The PROSPECT-2 Study is testing an investigational medicine called eptinezumab to see if it can safely prevent migraine headaches in adolescents and teens 12 to 17 years old. Researchers want to know if eptinezumab can safely reduce the number of headache days.

[Learn more about the study.](#) →

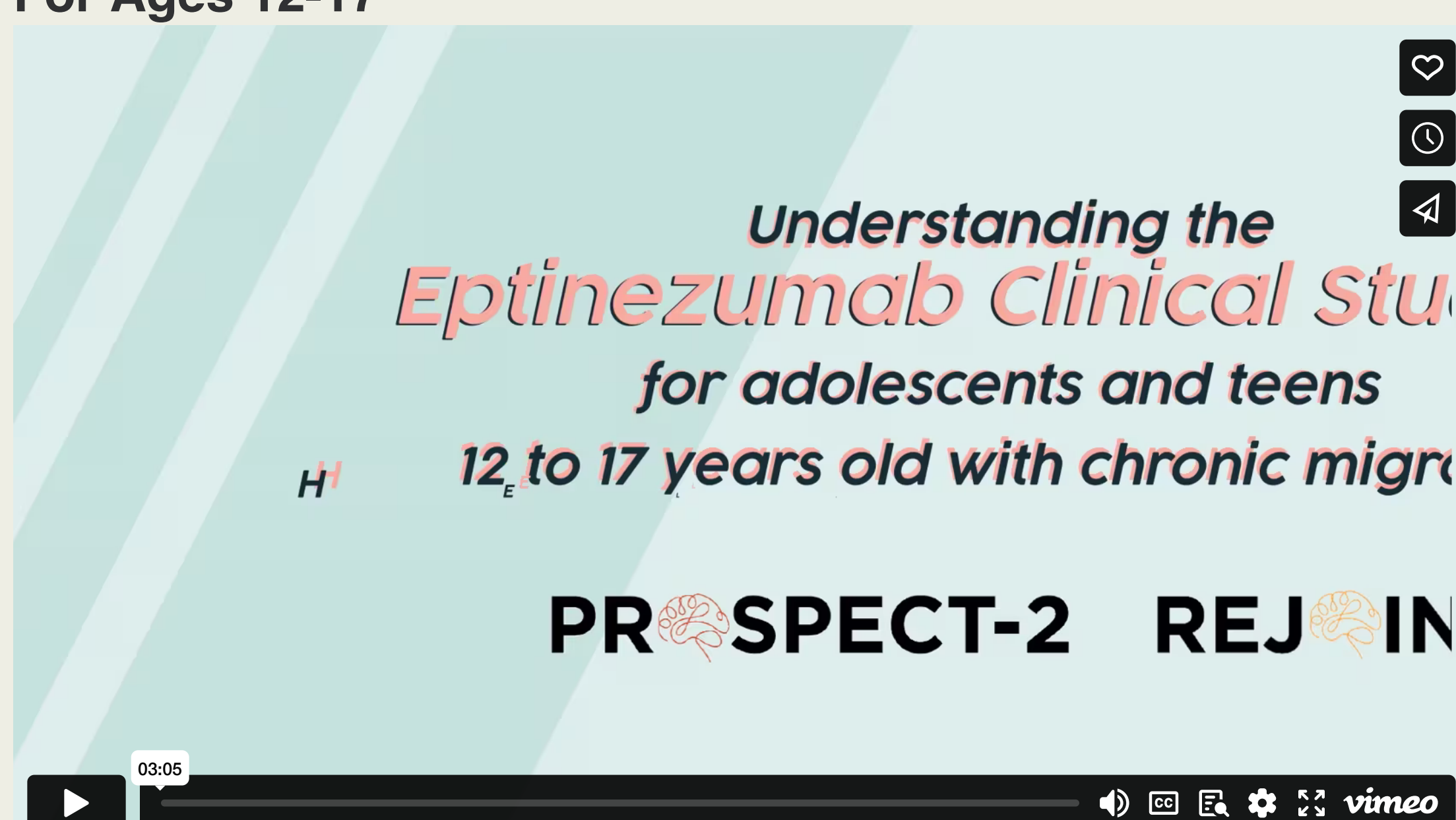
Understanding the PROSPECT-2 Study

Watch the videos below to learn more about the PROSPECT-2 Study.

For Adults & Caregivers



For Ages 12-17



Who can participate in the study?

To be considered for the PROSPECT-2 Study, your child must:

- Be 12 to 17 years of age.
- Have at least a 6-month history of chronic migraine.

What treatment will my child receive?

During the study, your child will receive either the study medicine, eptinezumab, or a placebo. The placebo looks like eptinezumab but contains no actual medicine. This gives researchers something to compare with the study medicine.

What happens during the study?

The main part of the study lasts about 16 weeks (4 months). During this time your child will receive study treatment and have study site visits for tests and health checks.

- ### 1 Screening (lasts 4 weeks)

Before starting, you will need to give permission for your child to join by signing the Informed Consent Form.

Your child will have 1 visit at which the study doctor will ask about your child's health, medicines he/she takes, and run tests to make sure your child is eligible for the study.
- ### 2 Headache tracking

Your child will be given an electronic diary to keep track of headaches for 4 weeks before starting treatment to make sure the study is right for him/her. If it is, your child will continue to track headaches throughout the 12-week study treatment period.
- ### 3 Study treatment (lasts 12 weeks)

If your child is eligible, he/she will be placed by chance into a group to receive either **eptinezumab or placebo**. The placebo looks like eptinezumab but contains no actual medicine. This gives researchers something to compare with the study medicine. To help keep the study fair, neither you nor the study team will know which group your child is in.

Your child will receive eptinezumab or placebo as a **one-time infusion** that takes about 30 minutes.

Your child will have **2 phone calls and 3 study visits** to check on his/her health.
- ### 4 Safety follow-up (lasts 8 weeks)

Once your child finishes the Treatment Period, he/she will have the option to either join a separate long-term study called REJOIN or complete their participation with 1 final follow-up visit.

What types of tests and health checks will my child have at study visits?

Some of the tests and health checks include:



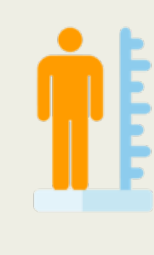
Physical exam



Blood pressure



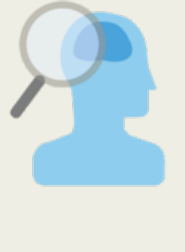
Temperature



Height



Weight



Neurological exam



Heart activity



Blood tests



Urine tests

Where do I go for more information?

To learn more about the PROSPECT-2 Study, speak with your doctor.

Frequently Asked Questions



General Study Questions

What are the benefits of being in the clinical study? ×

Your child may or may not directly benefit from being in either clinical study. However, the information collected may help doctors learn more about treating other adolescents and teens with chronic migraine in the future.

Will it cost me anything to have my child take part in the study? +

Who is sponsoring the study? +

Does my child have to stay in the study if we decide to take part? +

Study Setup Questions

How long does the study last? +

How many times will my child have to go to the study site? +

Study Treatment Questions

What treatment will my child receive? +

How are the treatment groups assigned? +

How is the study treatment given? +

What does investigational medicine mean? +

What is placebo? +

Are there any side effects from eptinezumab? +

Where do I go for more information?

To learn more about the PROSPECT-2 Study, speak with your doctor.



We value your privacy

We use cookies to enhance your browsing experience, serve personalized ads or content, and analyze our traffic. By clicking "Accept All", you consent to our use of cookies.

Customize ▼	Reject All	Accept All
-----------------------------	----------------------------	----------------------------

General Study Questions

What are the benefits of being in the clinical study?



Your child may or may not directly benefit from being in either clinical study. However, the information collected may help doctors learn more about treating other adolescents and teens with chronic migraine in the future.

Will it cost me anything to have my child take part in the study?



Your child's participation in either study will cost you nothing. Your child will receive the study medicine (or placebo) and have all the study tests at no cost to you. You may also be reimbursed for certain travel expenses to study visits.

Who is sponsoring the study?



The healthcare company H. Lundbeck A/S (Lundbeck) is sponsoring and running the PROSPECT-2 Study.

Does my child have to stay in the study if we decide to take part?



No, your child's participation in the study is completely voluntary. If you and your child decide to join and then change your minds, your child can leave the study at any time.

Study Setup Questions

How long does the study last?



The PROSPECT-2 Study lasts about 16 weeks (4 months).

How many times will my child have to go to the study site?



During the study, your child will visit the study site for tests and health checks about 3 to 4 times. You and your child will also have phone calls with the study team.

Study Treatment Questions

What treatment will my child receive?



During the study, your child will be assigned by chance to receive either the study medicine, eptinezumab, or a placebo. The placebo looks like eptinezumab but contains no actual medicine. This gives researchers something to compare with the study medicine.

How are the treatment groups assigned?



A computer is used to assign study participants to study treatment groups by chance, like dealing from a shuffled deck of cards. This is called randomization.

How is the study treatment given?



The study treatment is given as an infusion, which means slowly through a small needle into a vein. During the study, your child will receive a one-time infusion. The infusion takes about 30 minutes.

What does investigational medicine mean?



Investigational medicine means the medicine has been studied in a lab and is being studied in people but is currently not approved for use by regulatory agencies.

What is placebo?



The placebo looks like eptinezumab but contains no active medicine. This gives researchers something to compare eptinezumab to in order to better understand its effects.

Are there any side effects from eptinezumab?



Like all medicines, there is a chance for side effects, which are unwanted and unintended effects from a medicine. Your child's health will be closely monitored during the entire study. It is very important to tell the study doctor if you notice any changes in your child's health or if anything is bothering him/her.